



AOMORI

IWATE

MIYAGI

FUKUSHIMA

SENDAI

Lessons save lives.

3.11 DENSHO ROAD

Foundational Message

Because of the Great East Japan Earthquake that struck on March 11, 2011, a wide area of 500 km along North East Japan's Pacific coast suffered enormous damage. Although many precious lives and valuable properties were tragically lost, many lives were also saved. In the areas affected by the disaster, many facilities have been set up to communicate the realities of the disaster and the lessons learned from it.

In recent years, large-scale natural disasters such as earthquakes and floods have occurred frequently, but there also have been many cases where people would not have lost their lives if knowledge of past disasters had been utilized. Along with maintaining infrastructure, such as levees, a society must be aware of disaster prevention. Each individual should possess awareness and take appropriate action, such as evacuating. Thus, there is a deep significance to learning at disaster memorial facilities located in areas hit by disasters.

Meanwhile, disaster memorial facilities are spread over wide areas and multiple prefectures, and it is difficult to gather this information and visit them in a limited amount of time. As such, we categorize and offer information on awareness communication facilities, and we install guide maps and signs and build a network, allowing people to visit the facilities efficiently and meet their objectives within the time available. As a result, a system will be built that allows visitors to effectively learn the lessons of the Great East Japan Earthquake, and it will be possible to increase local exchange because many people from Japan and from overseas will visit the disaster-hit areas.

What is 3.11 Densho Road?

3.11 Densho Road refers to activities that use a network of disaster memorial facilities to conduct various initiatives and projects relating to disaster prevention, in order to learn the lessons of the Great East Japan Earthquake.

Many ruins and exhibition facilities in the areas affected by the Great East Japan Earthquake are available to learn the facts of the disaster and its lessons. The Disaster Memorial Network Council registered these facilities as "disaster memorial facilities" and aims to form a network by developing maps and guide signs. Using these facilities and this network as a foundation, it conducts various initiatives and projects related to disaster prevention, disaster mitigation, and learning from and preparing for tsunamis.

Through these activities, we hope to improve awareness of disaster prevention, promote communication with many people across regions and national borders, and to help form a disaster-resistant society and revitalize the region.

Disaster Memorial Facilities

Category 3

What are "Disaster Memorial Facilities?"

These facilities convey the facts of the Great East Japan Earthquake and the lessons learned from it, including the following

- ① Facilities for understanding lessons from the disaster
- ② Facilities that contribute to understanding disaster prevention and preparedness
- ③ Facilities for understanding the horror of disasters and the fearsomeness of nature
- ④ Facilities with historic or academic value related to disasters
- ⑤ Other facilities that communicate the facts of the disaster and the lessons learned from it

Registration Status of "Disaster Memorial Facilities"

	Number of facilities	Category 1	Category 2	Category 3
Aomori Prefecture	11	5	5	1
Iwate Prefecture	120	72	30	18
Miyagi Prefecture	136	73	34	29
Sendai City	(22)	(10)	(8)	(4)
Fukushima Prefecture	42	5	24	13
total	309	155	93	61

As of October 1, 2022

Conditions for category selection

Category 1
☆☆☆

Facilities to which one or more of the following apply.

Category 2
☆☆☆

Category 2 includes facilities from Category 1 that are easy for people to visit, such as those with convenient access to public transport or with a paid or free parking lot in the vicinity.

Category 3
☆☆☆

includes facilities from Category 2 that particularly consider visitors' ease of understanding by, for example, providing tour guides or storytelling activities.

1 Hachinohe City, Aomori

A graphical timeline shows the journey from the earthquake's occurrence to recovery and reconstruction.

Hachinohe City Minato Experience & Learning Center

■ 67-7, Tatehana, Minatomachi, Hachinohe-shi, Aomori
■ TEL 0178-38-0385



2 Miyako City, Iwate

This hotel allows you to learn about the terror of a tsunami, you can also watch previously unreleased footage to the media in the hotel. (Visits to inside the hotel and viewing of the footage require reservations.)

The Tsunami Remains Taro Kanko Hotel

■ 80-1 nohara, Aza Taro, Miyako-shi, Iwate
■ TEL 0193-77-3305 (Disaster Prevention Learning Guide)



3 Miyako City, Iwate

This is a center for learning about earthquakes and disaster prevention in the Taro area.

Taro Shiosato Station

■ 2-5-1, Taro, Miyako-shi, Iwate
■ TEL 0193-65-7506



4 Miyako City, Iwate

Introducing 54 Tsunami stone monuments. Learn with videos and a disaster preparation quiz.

Miyako City Civic Center Disaster Prevention Plaza

■ 1-1-30 Miyamachi, Miyako-shi, Iwate
■ TEL 0193-63-4166



5 Miyako City, Iwate

Here, you can look out on the newly built seawall and a reconstruction of its original form at the same time.

Taro Seawall

■ Kawamukai, Taro, Miyako-shi, Iwate
■ TEL 0193-65-0031 (Miyako Civil Engineering Center, Coastal Development and Promotion Bureau, Iwate Prefecture)



6 Miyako City, Iwate

When you stand on the Memorial Hill, at a glance, you can see the height of tsunami.

Tsunami Memorial Park Nakanohama

■ Dal-3 Chihwari 123, Sakiyama, Miyako-shi, Iwate
■ TEL 0193-62-3912

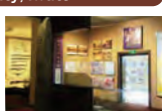


7 Ofunato City, Iwate

A short film on the Great East Japan Earthquake and tsunami is shown here, in addition to a display of records from tsunami that hit Ofunato in the past.

Ofunato City Museum

■ 221-86, Ohama, Massakicho, Ofunato-shi, Iwate
■ TEL 0192-29-2161



8 Kuji City, Iwate

View tablets on progress with the recovery and reconstruction from the earthquake.

Underground Aquarium and Science Museum Oil and Culture Hall "Moguranpia"

■ Dal-1 Chihwari 43-7, Mugyo, Samuramachicho, Kuji-shi, Iwate
■ TEL 0194-75-3551



9 Tono City, Iwate

Records of the logistical support activities that the government and people united to provide are displayed.

3.11 Great East Japan Earthquake Tono City Logistical Support Archive

■ 10 Chihwari 46, Nukamae, Aozasacho, Tono-shi, Iwate (In the site of Tono City General Disaster Prevention Center)
■ TEL 0198-62-2111

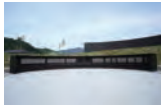


10 Kamaishi City, Iwate

This facility to pay tribute to victims of the Great East Japan Earthquake, and teaches lessons of the earthquake to future generations.

Kamaishi Memorial Park

■ 4-chome chinal, Unosumaicho, Kamaishi-shi, Iwate
■ TEL 0193-27-5666



11 Kamaishi City, Iwate

This facility that conveys the events and lessons learned from the earthquake and promotes disaster prevention.

Tsunami Memorial Hall

■ 4-901-2, Unosumaicho, Kamaishi-shi, Iwate
■ TEL 0193-27-5666



12 Otsuchi Town, Kamihei, Iwate

This facility where many residents can gather alongside exhibits showing records of the disaster.

Otsuchi Cultural Community Center "Oshacchi"

■ 1-15, Suehirocho, Otsuchi-cho, Kamihei-gun, Iwate
■ TEL 0193-27-5181



13 Tanohata Village, Shimohei, Iwate

The collapsed seawall is preserved as it was at the time of the disaster.

The Disaster Remains Seawall of Aketo District

■ Aketo Kaigan, Tanohata-mura, Shimohel-gun, Iwate
■ TEL 0194-34-2111



14 Tanohata Village, Shimohei, Iwate

This park was built on the site of the former Shimanokoshi Station building, which was washed away by the tsunami.

Shimanokoshi Fureai Park

■ 1-4/ 1-52, Matsumaesawa, Tanohata-mura, Shimohel-gun, Iwate
■ TEL 0194-34-2111



15 Tanohata Village, Shimohei, Iwate

The boulders washed ashore by the 1896 Meiji Sanriku Tsunami and the stone monuments for the 1933 Showa Sanriku Tsunami have been relocated here.

Raga Fureai Park

■ 27-2, Raga, Tanohata-mura, Shimohel-gun, Iwate
■ TEL 0194-34-2111



16 Rikuzentakata City, Iwate

This facility for communicating the tsunami's facts and lessons to people in Japan and abroad and to people in the future.

Iwate Tsunami Memorial Museum

■ 180 Dotekage, Kesencho, Rikuzentakata-shi, Iwate
■ TEL 0192-47-4455



17 Rikuzentakata City, Iwate

This place for mourning, for communicating the disaster memorial and for showing the will to reconstruction.

Takamatsubara Memorial Park for TSUNAMI Disaster

■ 180 Dotekage, Kesencho, Rikuzentakata-shi, Iwate
■ TEL 0192-22-8911 (Main)



18 Noda Village, Kunohe, Iwate

This facility for exhibitions and interaction to connect records and memories from before and after the earthquake.

Noda Village Reconstruction Exhibition Room

■ 17-107, Noda, Noda-mura, Kunohe-gun, Iwate
■ TEL 0194-78-2963



19 Yamada Town, Shimohei, Iwate

Presents lessons from the earthquake and the road to recovery through testimonial footage and panel exhibits.

Yamada Civic Exchange Center

■ 6-24, Kawamukaicho, Yamada-machi, Shimohel-gun, Iwate
■ TEL 0193-82-3111 (Main)



20 Sendai City, Miyagi

This facility describes the support activities performed by consumer cooperatives.

The Great East Japan Earthquake Exhibition

■ 4-2-2, Yaotome, Izumi-ku, Sendai, Miyagi (Inside the Miyagi COOP Cultural Hall With) ■ TEL 022-374-8531



21 Sendai City, Miyagi

The gateway to the eastern coastal area damaged by the tsunami.

Sendai 3/11 Memorial Community Center

■ 85-4, Kutsugata, Arai, Wakabayashi-ku, Sendai, Miyagi (Inside the Sendai Subway Tozai Line Arai Station Building) ■ TEL 022-390-9022



22 Sendai City, Miyagi

Communicating the threat of the tsunami, the lessons learned from it, and the local area's history.

Ruins of the Great East Japan Earthquake: Sendai Arahama Elementary School

■ 32-1, Shinborihata, Arahama, Wakabayashi-ku, Sendai, Miyagi
■ TEL 022-355-8517



23 Ishinomaki City, Miyagi

Displays the handwritten newspapers that were posted on the walls of evacuation shelters.

Ishinomaki NEWSée

■ Hoshino Box Piazza 1F, 2-8-2, Chuo, Ishinomaki-shi, Miyagi
■ TEL 0225-98-7323



24 Ishinomaki City, Miyagi

Encourages people to change their behavior to protect future lives from sadness and loss from a citizen's perspective.

March 11 Education & Exhibition Theater (MEET Kadonowaki)

■ 5-1-1, Kadonowakicho, Ishinomaki-shi, Miyagi
■ TEL 0225-98-3691



25 Ishinomaki City, Miyagi

Continues to pass down wisdom through storytelling, Apps, and projections of evacuation behavior.

3.11 Memorial Hall MINAMIHAMA TSUNAGU-KAN

■ 3-1-1, Minamihamacho, Ishinomaki-shi, Miyagi
■ TEL 0225-98-3691



26 Kesenuma City, Miyagi

Under extended closure for facility upgrades.

Karakuwa Visitor Center

■ 4-3, Sakihama, Karakuwacho, Kesenuma-shi, Miyagi
■ TEL 0226-32-3029



27 Kesenuma City, Miyagi

An art gallery that thinks about the future of the region living in harmony with the ocean.

Rias Ark Museum of Art Permanent Exhibition "Document of the Great East Japan Earthquake and a History of Tsunami Disaster"

■ 138-5, Akaiwa-Makisawa, Kesenuma-shi, Miyagi
■ TEL 0226-24-1611



28 Kesenuma City, Miyagi

This facility preserved as it was directly after the disaster.

Ruins of the Great East Japan Earthquake Kesenuma City Memorial Museum

■ 9-1, Hajikami-Semukai, Kesenuma-shi, Miyagi
■ TEL 0226-28-9671



29 Natori City, Miyagi

Even if we forget the tsunami, we must not forget what we learned from it.

Tsunami Recovery Memorial Museum "Mémoire de Yuriage"

■ 3-5-1, Yuriage-higashi, Natori-shi, Miyagi
■ TEL 022-738-9221



30 Iwanuma City, Miyagi

This facility for learning about disaster prevention and environmental conservation.

Millennium Hope Hills Exchange Center

■ 177 Hama, Shimonogo, Iwanuma-shi, Miyagi
■ TEL 0223-23-8577



31 Higashimatsushima City, Miyagi

This facility combines a museum, ruins, and a monument in a single location.

3.11 Disaster Recovery Memorial Museum of Higashi-Matsushima City

■ 56-36, Kitayokei, Nobiru, Higashimatsushima-shi, Miyagi
■ TEL 0225-86-2985



32 Minamisanriku Town, Motoyoshi, Miyagi

This facility communicates the threat of natural disasters and the importance of disaster prevention.

Takano Hall

■ 32-1, Shiomicho, Shizugawa, Minamisanriku-cho, Motoyoshi-gun, Miyagi
■ TEL 0226-46-2442 (Minamisanriku Hotel Kanryo)



33 Natori City, Miyagi

The park grounds consist of five zones, including a prayer zone.

Natori Earthquake Disaster Memorial Park

■ 3-3-1, Yuriage-higashi, Natori-shi, Miyagi
■ TEL 022-384-2111



34 Shiogama City, Miyagi

Recording and exhibition centered on the first week after the Great East Japan Earthquake.

Shiogama Tsunami Evacuation Center

■ 1-4-1, Minatomachi, Shiogama-shi, Miyagi
■ TEL 022-794-7232



35 Matsushima Town, Miyagi, Miyagi

This facility introduces the process from initial response to restoration / recovery on the panel etc.

Ishidasawa Evacuation Center

■ 12-2, Ishidazawa, Matsushima, Matsushima-machi, Miyagi-gun, Miyagi ■ TEL 022-253-7110



36 Sendai City, Miyagi

Share lessons with valuable broadcast records and simulated experiences in VR.

NHK Sendai Broadcasting Center

■ 2-20-1, Honcho, Aoba-ku, Sendai, Miyagi
■ TEL 022-211-1001



37 Yamamoto Town, Watari, Miyagi

This facility that strives to pass down useful knowledge about tsunami, utilize it for disaster prevention education, and raise disaster prevention awareness.
Yamamoto Town Disaster Prevention Center / Yamashita Community Center



■ 1-8, Tsubamenomori, Yamamoto-cho, Watari-gun, Miyagi
■ TEL 0223-37-5592

40 Natori City, Miyagi

Used as a place for partnership, interaction, and fostering awareness about crisis and disaster prevention.



Natori Earthquake Recovery Museum

■ 1-1-1, Yuriage-higashi, Natori-shi, Miyagi
■ TEL 022-393-6520

43 Ishinomaki City, Miyagi

A memorial site for mourning and remembering, and teaching the importance of evacuating.



Ishinomaki City Okawa Elementary School Ruins

■ 94 Nirashima, Kamaya, Ishinomaki-shi, Miyagi
■ TEL 0225-24-6315

46 Ishinomaki City, Miyagi

Learn how preparedness and local knowledge can save lives, and reflect upon the sanctity of life and nature.



Ishinomaki City Kadowaki Elementary School Ruins

■ 4-3-15 Kadowaki-cho, Ishinomaki-shi, Miyagi
■ TEL 0225-98-8630

49 Iwaki City, Fukushima

This facility preserves scars from the disaster, such as ground subsidence due to the earthquake.



Aquamarine Fukushima

■ 50 Tatsumicho, Onahama, Iwaki City, Fukushima
■ TEL 0246-73-2525

52 Soma City, Fukushima

This facility preserves the original landscape of Soma, which was lost in the disaster, for future generations.



2011 Tsunami and Earthquake Victims Memorial Hall of Soma City

■ 270 Otsu, Haragama, Soma-shi, Fukushima
■ TEL 0244-32-1366

55 Naraha Town, Futaba, Fukushima

The exchange facility, which is a symbol of reconstruction, reflects the opinions of the townspeople.



Naraha CANvas, a Social Center for everyone

■ 260 Nakaman, Kitada, Naraha-machi, Futaba-gun, Fukushima
■ TEL 0240-25-5670

58 Tomioka Town, Futaba, Fukushima

This privately-run facility sharing information about eight Futaba towns and villages from the local residents' perspective.



Futaba Information Center

■ 295 Kobama Chuo, Futaba Times 1F, Tomioka-machi, Futaba-gun, Fukushima
■ TEL 0240-23-6612

60 Namie Town, Futaba, Fukushima

The ruins tell future generations about the damage from the earthquake, tsunami, and nuclear hazards.



Remains of the Earthquake Namie Town Ukedo Elementary School

■ 56 Mutsutaira, Ukedo, Namie-machi, Futaba-gun, Fukushima
■ TEL 0240-23-7041

38 Yamamoto Town, Watari, Miyagi

Tour of a school building marked with reminders about disaster preparation and mitigation.



Yamamoto Town Ruins of the Great East Japan Earthquake: Nakahama Elementary School

■ 22-2, Kune, Sakamoto, Yamamoto-cho, Watari-gun, Miyagi
■ TEL 0223-23-1171

41 Kesenuma City, Miyagi

This place of prayer for mourning, requiem, disaster preparation, and peace for eternity.



Kesenuma Reconstruction Memorial Park

■ 264 Jinyama, Kesenuma-shi, Miyagi
■ TEL 0226-22-8600 (Main)

44 Minamisanriku Town, Motoyoshi, Miyagi

Passes on the scenery, an asset that spans generations, and the lessons from the earthquake.



Ocean View Forest for Saving Life

■ 80/81 Shizugawa Kurosaki, Minamisanriku-cho, Motoyoshi-gun, Miyagi
■ TEL 0226-46-2442 (Minamisanriku Hotel Kanyo)

47 Ishinomaki City, Miyagi

Continues encouraging the local community and tells future generations about the lessons from the earthquake.



Ganbarou Ishinomaki Sign Board

■ 3-chome, Minamihama-cho, Ishinomaki-shi, Miyagi (Inside Ishinomaki Minamihama Tsunami Memorial Park)
■ TEL 0225-23-9638

50 Iwaki City, Fukushima

This facility that conveys the journey from the earthquake to recovery and reconstruction. It also conveys Iwaki as it is today.



Live Iwaki Mew-seum "3.11 Iwaki Great East Japan Earthquake Exhibition"

■ 43-1, Tatsumicho, Onahama, Iwaki-shi, Fukushima
■ TEL 0246-92-3701

53 Miharu Town, Tamura, Fukushima

Learn about the current state of Fukushima, understand radiation, and envision the future.



Center for Environmental Creation Communication Building "COMMUTAN FUKUSHIMA"

■ 10-2, Fukasaku, Miharu-machi, Tamura-gun, Fukushima
■ TEL 0247-61-5721

56 Iwaki City, Fukushima

It is a facility that surely conveys the experience of the Iwaki City earthquake and the memories and lessons learned from the earthquake to future generations.



Iwaki 3.11 Memorial and Revitalization Museum

■ 3-11, Usulso, Iwaki-shi, Fukushima
■ TEL 0246-38-4894

59 Naraha Town, Futaba, Fukushima

Presents how the sports facility changed into a site for responding to the earthquake and nuclear accident and its subsequent full reopening.

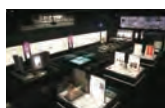


National Training Center J-VILLAGE

■ 8 Utsukushimori, Yamadaoka, Naraha-machi, Futaba-gun, Fukushima
■ TEL 0240-26-1111

61 Tomioka Town, Futaba, Fukushima

Exhibits how the earthquake and nuclear hazards robbed people of their daily lives and changed the town.



The Historical Archive Museum of Tomioka

■ 760-1, Otsuka, Motooka, Tomioka-machi, Futaba-gun, Fukushima
■ TEL 0240-25-8644

39 Yamamoto Town, Watari, Miyagi

As time slowly passes around the sundial, it provokes thoughts about past and future disasters.



Nakahama Elementary School Earthquake Monument "Sundial of March 11th"

■ 22-2, Kune, Sakamoto, Yamamoto-cho, Watari-gun, Miyagi
■ TEL 0223-23-1171

42 Ishinomaki City, Miyagi

This facility for mourning and requiem for the victims and publicizing the resolve to reconstruct.



Ishinomaki Minamihama Tsunami Memorial Park

■ 2-1-56, Minamihama-cho, Ishinomaki-shi, Miyagi
■ TEL 0225-98-8081 (Exhibition) 0225-98-7401 (Park)

45 Ishinomaki City, Miyagi

Shares lessons to avoid repeating the same tragedy.



Memorial Moment for the Great East Japan Earthquake (Memorial Monument for Hiroyi Kindergarten Children)

■ 5-242, Kadowakicho, Ishinomaki-shi, Miyagi
■ TEL 0225-98-3691 (3.11 Memorial Network)

48 Minamisanriku Town, Motoyoshi, Miyagi

Share experiences of the earthquake and discuss ideas about the meaning of nature and living.



MINAMISANRIKU 311 Memorial

■ 200-1, Itsukamachi, Shizugawa, Minamisanriku-cho, Motoyoshi-gun, Miyagi
■ TEL 0226-47-2550

51 Iwaki City, Fukushima

Situations and experiences during the outbreak of the disaster are described by videos and panels.



Iwaki City Regional Disaster Prevention Exchange Center—Hisanohama/Ohisa Fureaikan

■ 32 Hisanohama Nakamachi, Hisanohamamachi, Iwaki-shi, Fukushima
■ TEL 0246-82-2111

54 Shirakawa City, Fukushima

The Komine Castle History Museum presents the post-earthquake reconstruction. Guided tours available.



Komine Castle

■ 1 Kakunai, Shirakawa City, Fukushima
■ TEL 0248-22-1111 (Main)

57 Futaba Town, Futaba, Fukushima

This facility that reliably passing down the experiences, lessons learned, and reconstruction steps of the Great East Japan Earthquake, tsunami and nuclear accident.



The Great East Japan Earthquake and Nuclear Disaster Memorial Museum

■ 39 Takada, Nakano, Futaba-machi, Futaba-gun, Fukushima
■ TEL 0240-23-4402

For more information please scan QR Code ▶



information
General Incorporated Foundation
3.11 Densho Road Promotion Organization

Honcho 3-2-26-3F, Aoba-ku, Sendai, Miyagi
980-0014 JAPAN
TEL.+81-22-393-4261 FAX.+81-22-393-4271
E-mail.info@311densho.or.jp
HP.https://www.311densho.or.jp